

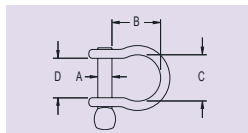
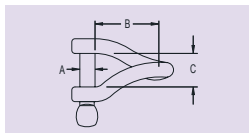
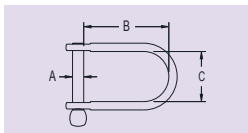
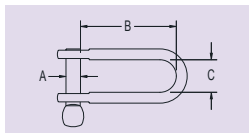
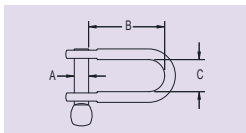


### FEATURES

- ▶ High strength to weight ratio.
- ▶ Many shapes and sizes to suit any application.
- ▶ Coined shackle pin head available with hole for seizing wire.

### MATERIALS

- ▶ Grade 316 stainless steel bodies and pins.



PRODUCT No.	A		B		C		D		(U.D.L.)* B.L.		(P.L.)* B.L.		WEIGHT	
	mm	(in.)	mm	(in.)	mm	(in.)	mm	(in.)	kg	(lb)	kg	(lb)	g	(oz)
<b>Standard Dee</b>														
RF1851	3.2	(1/8)	12	(15/32)	9	(11/32)	-	-	550	(1210)	280	(620)	2	(0.1)
RF1806	4	(5/32)	15	(19/32)	10	(13/32)	-	-	800	(1760)	600	(1320)	5	(0.2)
RF616	4.8	(3/16)	18	(23/32)	11	(7/16)	-	-	1400	(3090)	800	(1760)	15	(0.5)
RF617	6.4	(1/4)	22	(7/8)	14	(9/16)	-	-	2300	(5070)	1400	(3090)	25	(0.9)
RF618	7.9	(5/16)	29	(1 5/32)	17	(21/32)	-	-	3600	(7940)	2700	(5950)	50	(1.8)
RF619**	9.5	(3/8)	40	(1 9/16)	18	(23/32)	-	-	5400	(11900)	3600	(7940)	80	(2.8)
RF620**	12.7	(1/2)	41	(1 5/8)	19	(3/4)	-	-	7700	(16980)	7500	(16530)	130	(4.6)
RF1035***	15.9	(5/8)	45	(1 25/32)	26	(1 1/32)	-	-	14000	(30860)	11000	(24250)	280	(9.9)
<b>Long Dee</b>														
RF621	4	(5/32)	26	(1 1/32)	10	(13/32)	-	-	800	(1760)	600	(1320)	10	(0.4)
RF622	4.8	(3/16)	31	(1 7/32)	12	(15/32)	-	-	1400	(3090)	800	(1760)	15	(0.5)
RF623	6.4	(1/4)	43	(1 11/16)	14	(9/16)	-	-	2300	(5070)	1400	(3090)	30	(1.1)
RF624	7.9	(5/16)	54	(2 1/8)	17	(21/32)	-	-	3600	(7940)	2700	(5950)	60	(2.1)
RF625**	9.5	(3/8)	59	(2 5/16)	18	(23/32)	-	-	5800	(12790)	4500	(9920)	90	(3.2)
RF626**	12.7	(1/2)	70	(2 3/4)	19	(3/4)	-	-	7700	(16980)	7500	(16530)	155	(5.5)
<b>Wide Dee</b>														
RF1850S	3.2	(1/8)	12	(15/32)	9	(11/32)	-	-	550	(1210)	280	(620)	2	(0.1)
RF1852	4.8	(3/16)	28	(1 3/32)	21	(13/16)	-	-	1400	(3090)	700	(1540)	15	(0.5)
RF1853	6.4	(1/4)	39	(1 17/32)	30	(1 3/16)	-	-	2300	(5070)	1100	(2430)	26	(0.9)
RF639	7.9	(5/16)	51	(2)	28	(1 3/32)	-	-	3600	(7940)	2300	(5070)	70	(2.5)
RF640	9.5	(3/8)	55	(2 5/32)	29	(1 5/32)	-	-	5800	(12790)	4000	(8820)	95	(3.4)
RF641**	12.7	(1/2)	66	(2 19/32)	31	(1 7/32)	-	-	7700	(16980)	5500	(12130)	170	(6.0)
<b>Twisted</b>														
RF627	4	(5/32)	22	(7/8)	10	(13/32)	-	-	800	(1760)	600	(1320)	5	(0.2)
RF628	4.8	(3/16)	27	(1 1/16)	10	(13/32)	-	-	1400	(3090)	800	(1760)	15	(0.5)
RF629	6.4	(1/4)	39	(1 17/32)	14	(9/16)	-	-	2300	(5070)	1400	(3090)	30	(1.1)
RF630	7.9	(5/16)	48	(1 29/32)	16	(5/8)	-	-	3600	(7940)	2700	(5950)	65	(2.3)
RF631**	9.5	(3/8)	53	(2 3/32)	16	(5/8)	-	-	5800	(12790)	4500	(9920)	90	(3.2)
RF632**	12.7	(1/2)	64	(2 17/32)	19	(3/4)	-	-	7700	(16980)	7500	(16530)	165	(5.8)
<b>Bow</b>														
RF613S****	3	(1/8)	13	(1/2)	9	(11/32)	6.4	(1/4)	550	(1210)	280	(620)	3	(0.1)
RF633	4	(5/32)	14	(9/16)	13	(1/2)	10	(13/32)	800	(1760)	600	(1320)	5	(0.2)
RF634	4.8	(3/16)	17	(21/32)	14	(9/16)	11	(7/16)	1400	(3090)	800	(1760)	10	(0.4)
RF635	6.4	(1/4)	21	(13/16)	19	(3/4)	16	(5/8)	2300	(5070)	1400	(3090)	20	(0.7)
RF636	7.9	(5/16)	27	(1 1/16)	22	(7/8)	16	(5/8)	3600	(7940)	2700	(5950)	45	(1.6)
RF638**	7.9	(5/16)	27	(1 1/16)	22	(7/8)	16	(5/8)	3600	(7940)	2700	(5950)	45	(1.6)
RF637**	9.5	(3/8)	51	(2)	36	(13/32)	20	(25/32)	5800	(12790)	4500	(9920)	90	(3.2)

\* (P.L.) B.L. – The "Point Load" breaking load of the shackle; the load is only applied at the centre or one side of the shackle pin.

(U.D.L.) B.L. – The "Uniformly Distributed Load" breaking load of the shackle; the load is applied across the full span of the shackle pin.

\*\* Shackle pins drilled for seizing wire. \*\*\*RF1035 features 20.7mm (13/16") A/F hexagonal pin head. \*\*\*\*RF613S has a slotted head.